



# ACDC

Australian Cotton  
Disease Collaboration

## STRATEGIC PLAN

May 2024 – June 2028



A collaborative approach to cotton disease  
research to reduce the economic impact of  
current and emerging diseases



IS AN INITIATIVE OF



**CRDC**

IN PARTNERSHIP WITH



UniSQ



Queensland  
Government



# TABLE OF CONTENTS

**INTRODUCTION** **01**

---

**OBJECTIVES** **02**

---

**COLLABORATION** **03**

---

**RESEARCH** **04**

---

**CAPACITY BUILDING** **05**

---

**GOVERNANCE** **06**

---

**CONTACTS** **07**

Disease is a high priority issue for the Australian cotton industry. It contributes to significant yield losses and undermines long-term confidence in growing cotton. In extreme cases, some growers have opted out of growing cotton in response to severe and escalating disease pressure.

In the Cotton Research and Development Corporation (CRDC) Strategic RD&E Plan 2023-28 (Clever Cotton), CRDC is undertaking a collaborative approach to disease research to reduce the economic impact of current and emerging diseases through the \$13 million Australian Cotton Disease Collaboration (the ACDC).

CRDC has invested in cotton disease research over several decades, nevertheless, disease is still one of the leading limitations in the cotton production system. CRDC commissioned a cotton disease review by Professor Mark Gibberd of the Centre for Crop Disease Management (CCDM), Curtin University. The review found that the cotton industry has a limited tool kit for disease control and disease research should remain a high priority for the CRDC. It highlighted the need for ongoing and strategic investments – with strong linkages to ongoing economic impact assessment.

The ACDC is a comprehensive national disease program which understands the impact of disease, while enhancing foundational pathology resources and capability. It will deliver tactical management and innovative technical solutions for cotton growers. ACDC is developing long-term strategic partnerships, focused on genuine co-design, partner co-investment, capacity building.

The ACDC has been formed to bring together current and future industry knowledge and research for in-field disease management. Long-term strategic partners were selected based on their clear strategic alignment to CRDC's mission under Clever Cotton.

**Reduce the economic impact of current and emerging cotton diseases to less than five per cent of the cost of production, through practice change underpinned by efficient and collaborative RD&E.**

CRDC engaged two Strategic Partners and operate as a Virtual National Centre. The University of Southern Queensland (UniSQ) is the lead Strategic Partner and manager of the Virtual National Centre, along with leading Domain B (Understanding Pathogen Behaviour) and Domain D (Investment in supporting the testing and introduction of new actives (fungicides and mediators of plant defence) for disease control). The Queensland Department of Primary Industries (Qld DPI) Strategic Partner will lead Domain A (Systems Based Disease Control Packages) and Domain C (Increased adoption of spatial data analytics and advanced modelling capabilities for disease prediction and management).

Through the ACDC, CRDC aims to also maintain and build capacity in partner organisations and collaborators, and bring together complementary skills to achieve the ACDC's mission.



**ACDC Director**  
Prof Sambasivam  
Periyannan, UniSQ



**ACDC Deputy Director**  
A/Prof Linda Smith,  
Qld DPI

## Increase profitability of the Australian cotton industry by delivering adoptable innovative research outputs

- Demonstrably link research activity with the CRDC Strategic Plan and key investment targets
- Map research outcomes to Australian Federal Govt's National Agriculture Innovation Policy 2021 and the Ag2030 Strategy
- Demonstrably link research activity with the UniSQ and Qld DPI strategic plans
- Demonstrate research impact on the current and future profitability of the Australian cotton industry

## Deliver human capacity with the relevant skills to meet the current and future needs for cotton disease research

- Build capacity of partners and collaborators in cotton disease research to generate quality research outputs of value to each
- Seek and evaluate aligned innovation capability and a pipeline to industry co-investment
- Demonstrate ongoing commitment to staff development and training undergraduate and postgraduate students
- Demonstrate ongoing commitment to industry engagement

## Develop a co-innovation model with key industry collaborators to build and sustain research capability and deliver impact

- Demonstrably link projects to end user organisations (major breeding and life science companies, consultant agronomists and farmers) and research activities undertaken in partnership with end user organisations
- Maintain and expand effective national and international collaborations

CRDC developed Clever Cotton in collaboration with the cotton industry and ACDC collaboration activities will underpin the strategy's delivery.

Industry-defining challenges confront Australian agriculture and they demand novel approaches to collaborative innovation. Incremental cotton focused strategies are important. However, to achieve real change and meet the expectation of a \$100 billion agricultural sector, RD&E needs to deliver transformational changes to respond to shifting community expectations around production, sustainability and the environment.

Clever Cotton does things differently and will involve different partners. New industry and commercial partnerships will help CRDC deliver Clever Cotton to address complex problems facing agriculture, including climate change, sustainability, digital disruption and biosecurity. CRDC will broker research investment and work with external investors to deliver better solutions more rapidly for Australia's cotton growers.

As a result, in Clever Cotton, CRDC is undertaking a collaborative approach to disease research to reduce the economic impact of current and emerging diseases through the Australian Cotton Disease Collaboration (the ACDC). To achieve this, CRDC is committing \$9 million to disease RD&E, through the ACDC, over the five years of Clever Cotton. The ACDC will develop long-term strategic partnerships, focused on genuine co-design and partner co-investment.

The ACDC will assist the Australian Cotton industry under the CRDC's Paddock Pillar and Adaptive Systems Disease sub-theme of Clever Cotton.



Elsie Hudson, CRDC Innovation Broker and Mick Humphries, Cotton Grower

## Paddock



### Adaptive systems

#### Objective

Grow the profitability and resilience of Australian cotton-farming systems through innovative solutions, technologies and practices.

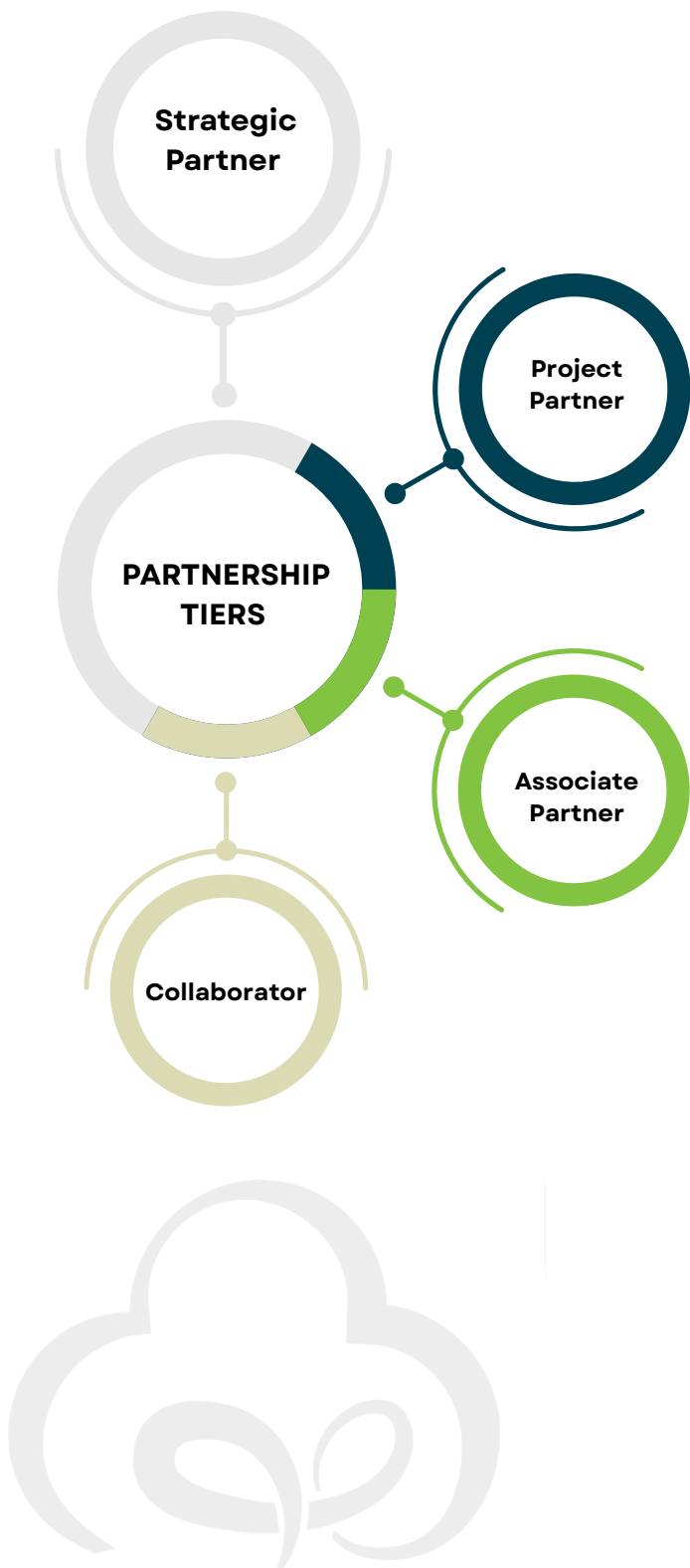
#### Impact

In 2028, Australian cotton-farming systems are resilient, biosecure, and able to thrive in an increasingly variable climate with enhanced resource efficiency.

Source: CRDC Strategic Plan 2023-2028

**CRDC mission under Clever Cotton is to reduce the economic impact of current and emerging cotton diseases to less than 5% of the cost of production, through practice change underpinned by efficient and collaborative RD&E**

Long-term strategic partners UniSQ and Qld DPI have been selected based on their clear strategic alignment to CRDC's mission under Clever Cotton, capacity building, willingness to co-invest, and commitment to co-design.



### Strategic Partners

- Co-invest at least \$750k–\$1M pa in cash and/or salaries. Additional co-investment in project specific equipment, facilities, resources and IP
- Build and retain cotton disease RD&E capacity and capability beyond the life of ACDC
- Commit to dedicated and sustained national leadership in cotton pathology and supporting supporting Project and Associate Partners
- Have internationally and/or nationally recognised talent and collaborative links that add value to research translation and/or RD&E outcomes

### Project Partners

- Co-invest at least \$500–\$750k pa. in cash, salaries, project-specific equipment, facilities, resources or IP
- Commits to being involved in cotton disease RD&E and dedicated and sustained human resource capability as it relates to cotton pathology
- Have internationally and/or nationally recognised talent and collaborative links that add value to research translation and/or RD&E outcomes

### Associate Partners

- Largely focus on a well-defined enabling capability, or the utilisation of research outputs for on ground impact
- Are part of the ACDC RD&E community (e.g. technical and research working groups)
- Are involved in individual projects or project activities aligned with the partner's capability

National collaboration and partnerships map to Clever Cotton and are consistent with the goals of the ACDC.

## Aspirational outcomes



Australian cotton industry has access to critical information on cotton diseases for identifying tactical management and innovative solutions for growers.



The ACDC facilitates the coordination of Australian researchers from a diverse range of organisations and experience to collaborate to support the reduction of disease impacts on the cost of production for the Australian cotton industry.



Sharna Holman  
Development Extension  
Officer (Cotton)  
CottonInfo Biosecurity and  
Disease Technical Lead



Mick Humphries, Cotton Grower  
and Janelle Montgomery,  
CottonInfo Program Manager



## Intermediate Outcomes

### Industry

- Australian cotton growers have access to a nationally aligned disease program with sustained and accessible leadership
- Industry can more rapidly respond and adapt to significant disease outbreak

### ACDC researchers

- The ACDC is a trusted facilitator of the collaboration of Australian cotton disease research which is sustained and scalable
- The ACDC can continue building capacity, while nourishing next generation of researchers to address future challenges in the cotton industry

### CRDC and partner institutions

- Contribute to a profitable cotton industry and strengthening of research collaboration
- Develop national leadership in cotton disease research
- Contribute to positive regional development and socioeconomic stability in cotton growing regions throughout Australia

# 04 RESEARCH DOMAINS

The research domains identified focus on industry need to build upon fundamental research historically conducted by the cotton industry and research partners.

- A** Systems-based disease control
- B** Understanding pathogen behaviour
- C** Spatial data analytics and modelling
- D** Fungicides and plant defense mediators

## Tier 1 diseases

Black root rot, *Fusarium* and *Verticillium* wilt and *Alternaria* leaf spot

## Tier 2 diseases

*Rhizoctonia* rot, reoccurring wilt, target spot, grey mould and boll rot



## A

# Systems-based disease control

Domain A incorporates projects related to research in systems-based disease control packages.

There will be a robust theoretical framework for each disease of interest, clearly identified critical control points and the deployment of near-to-field analysis of disease pressure, soil health and agronomic solutions based on empirical data sets (derived from in-field trials, inclusive of economic impact assessment and glasshouse trials where appropriate).

Training and support provided to northern Australia will contribute to capacity building for surveillance of endemic, emerging and exotic diseases.



DOMAIN A Leader

**A/Prof Linda Smith**

Principal Plant Pathologist

Queensland Department of Primary Industries

Adjunct University of Southern Queensland

[linda.smith@dpi.qld.gov.au](mailto:linda.smith@dpi.qld.gov.au)

## Objectives

**A1**

**Tactical disease management including farming systems and impact on disease management**

**A2**

**Improved management options through understanding of etiology of cotton diseases in Australia**

**A3**

**Training and support for northern Australia**

## Aspirational outcomes



Australian cotton industry practice change is underpinned by evidence derived from a new generation of research approaches targeting disease management



Australian researchers have the capacity to respond to emerging disease threats in the cotton industry



CRDC has efficiency of R&D investment due to Australian pathologists adding value to existing field trials and activities

## A

### Systems-based disease control

## A1

### Tactical disease management including farming systems and impact on disease management

#### Intermediate Outcomes

**Industry (growers and advisors)**  
Theoretical Framework development

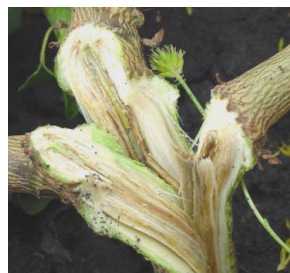
**In-field practice change**

**ACDC Researchers**

- Australian cotton growers and industry advisors manage Tier 1 diseases (*Verticillium*, *Fusarium*, Black root rot and *Alternaria*) using evidence-based real-time information and robust decision support tools
- Australian cotton industry can adopt new research outcomes based on the sequential development of the theoretical framework

- Australian cotton growers can plan 5-year rotations that manage disease risk and are economically viable
- Australian cotton growers' irrigation and nutrition management is informed by impacts on disease severity

- Australian researchers have access to new knowledge of fundamental approaches for systems-based cotton disease management
- The ACDC researchers have a quantifiable understanding of the impact of common rotations used, irrigation methods and frequency, and nutrition in the farming system for Tier 1 pathogens



Irrigation and nutrition management to reduce cotton wilt disease incidence

## A

### Systems-based disease control

## A2

### Improved management options through understanding of etiology of cotton diseases in Australia

#### Intermediate Outcomes

Industry

ACDC Researchers

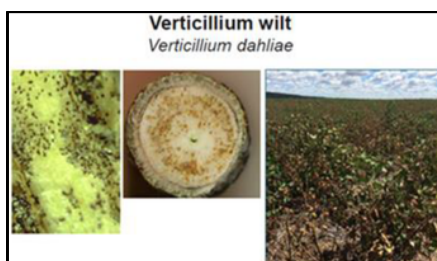
CRDC and partner institutions

Australian cotton growers:

- Understand the management implications of diversity in etiology among tier 1 pathogens
- Gain economic benefits via strategies that provide long term reductions in disease inoculum for cotton disease (Tier 1) and prevent inoculum build up
- Are informed of shifts in disease pathogenicity (Tier 1) that have agronomic significance
- Have access to a disease diagnostics service for identifying important and emerging diseases and aligned decision support and management strategies

- Tier 1 pathogens etiology is described and understood by cotton pathologists and ACDC researchers
- Understanding of emerging disease threats and etiology of emerging pathogens.
- The ACDC researchers build capacity around strategies and robust tools for rapid surveillance and monitoring of cotton diseases

- CRDC understands the pathway to market for disease diagnostics research outputs for the Australian cotton industry
- New knowledge around etiology of tier 1 and emerging pathogens provides sound basis for prioritising Qld DPI investment to protect Queensland Industries



Contribution of cotton residues to inoculum carryover



Spore trapping

## A

### Systems-based disease control

## A3

### Training and support for northern Australia

#### Intermediate Outcomes

##### Industry

- Surveillance capacity for endemic, emerging, and exotic pathogens is increased in northern Australia
- Baseline understanding of disease issues affecting northern Australia production regions

##### ACDC Researchers

- Qld DPI provides training and support to capacity build for surveillance of pathogens
- UniSQ provides training and support for capabilities to undertake diagnostics through molecular tools developed

##### CRDC and partner institutions

- CRDC understands the pathway to market for disease diagnostics research outputs for the Australian cotton industry
- Increase in the capacity to respond to emerging threats thereby protecting cotton production in northern Australia



A/Prof. Linda Smith (far right) conducting in-field training with the pathology team in Kununurra, WA on late season disease surveys and in-lab assessment of disease samples for potential pathogen



## Project Leads



**Dr Dinesh Kafle**

Plant Pathologist  
Queensland Department of  
Primary Industries  
dinish.kafle@dpi.qld.gov.au



**Sarah Nolan-Gorman**

Research Scientist  
Western Australia Department of  
Primary Industries and Regional  
Development  
sarah.nolan@dpird.wa.gov.au



**Linda Scheikowski**

Senior Plant Pathologist  
Queensland Department of  
Primary Industries  
linda.scheikowski@dpi.qld.gov.au



**A/Prof Joseph Foley**

Water Engineering and Irrigation  
University of Southern Queensland  
joseph.foley@unisq.edu.au



**Dr Murray Sharman**

Principal Plant Pathologist (Virology)  
Queensland Department of  
Primary Industries  
murray.sharman@dpi.qld.gov.au



**Dr Edward Mwando**

Cropping Group Leader  
Northern Territory Department of  
Agriculture and Fisheries  
edward.mwando@nt.gov.au



**Dr Ben Stodart**

Senior Lecturer Plant Biology  
Charles Sturt University  
bstodart@csu.edu.au

## B

### Understanding pathogen behaviour

Domain B incorporates projects related to understanding the pathogen phenotype - i.e. virulence and epidemiology and the genotype.

A collection of isolates of all fungal pathogens of cotton in Australia is being collated, crucial for understanding the evolution and spread of pathogenic strains, and screening cotton germplasm for broad-spectrum disease resistance. A gold standard reference genome assembly is being created for the key pathogens through the initiation of a global consortium. Genome resources and isolate collection, enable identifying strain-specific diagnostic markers for rapid disease surveillance, understanding pathogen population dynamics and virulence evolution in new strains.

Cotton germplasm resources for host-mediated disease resistance is being initiated. A host differential set is being established for each of the key pathogens to understand pathogen diversity and disease resistance mechanisms in cotton. Through trials, host range of cotton pathogens are being determined to assist with effective crop rotations to minimise disease incidence.

Disease complexity is being investigated to understand the compatibility between and within cotton pathogen species, thereby minimising co-incidence and proliferation of compatible pathogenic groups.









DOMAIN B Leader  
**Prof Sambasivam (Sam) Periyannan**  
 Crop Molecular Genetics, University of Southern Queensland  
[sambasivam.periyannan@unisq.edu.au](mailto:sambasivam.periyannan@unisq.edu.au)

#### Objectives

- B1** Develop pathogen genome reference material and resources
- B2** Develop host resistant resources and host range of cotton pathogens
- B3** Understanding disease complexity and co-infection

#### Aspirational outcomes

-  Foundational pathology resources and capability for rapid cotton disease surveillance and management are established
-  Australian cotton growers can benefit from the tactical disease management strategies developed using foundational resources
-  Growers can make informed decisions based on local/dominant pathotype knowledge
-  Key resources for the Australian cotton industry are established and maintained
-  Contribution to the sustainability of the cotton industry
-  Australian cotton growers have access to cotton varieties with resistance to the diversity of pathogens causing diseases

## B Understanding pathogen behaviour

### B1 Develop pathogen genome reference material and resources

#### Intermediate Outcomes

Industry

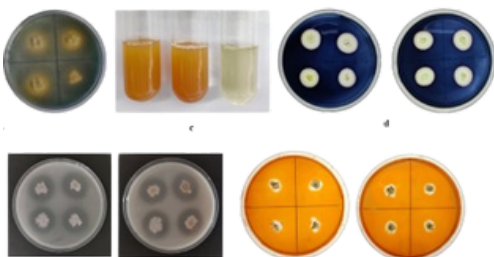
ACDC Researchers

CRDC and partner institutions

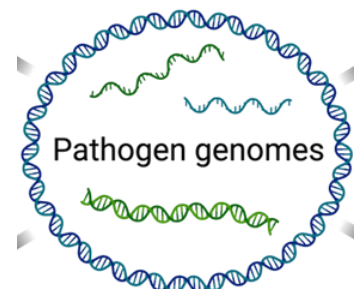
- Australian cotton industry understands cotton pathogen evolution and the dynamics of their threat to industry
- Industry has access to information on pathogen origin and distribution and pathogen risk across regions
- Industry benefits from improved cotton pathology and breeding industry relationships and collaborations (e.g. CSIRO/CBA) by access to information to pathogen population dynamics
- New incursions and changes in pathogen population and virulence are identified and characterised

- Researchers progress with confidence in national alignment of standard protocols and processes for cotton pathology including criteria for cataloguing
- The ACDC researchers have access to a centralised, well catalogued, robust spatial and temporal resource for Tier 1 cotton pathogens and data
- The ACDC researchers optimise time and space resources via innovative strategies for curation and collection of cotton pathogens using advances in data management
- The ACDC researchers have improved efficiency and impact due to knowledge of past research, increased publication and access to high quality reference genomes Tier 1 and selected Tier 2 cotton diseases
- The ACDC research collaboration is more extensive and efficient due to detailed knowledge on new strains

- UniSQ is recognised globally for capacity in cotton pathogen collection and characterisation
- UniSQ potentially commits to and gains returns from co-investment in storage facility of pathogen collection
- Continuous Qld and NSW DPI plant pathology and herbarium collection through access to cotton pathogen isolates at a national level.
- Improved confidence to co-invest in cotton research due to strength of shared resources and universal access



Priya et al. 2024 Micro Res



Lander & Sahl 2023 PLOS Biol

## B

### Understanding pathogen behaviour

## B2

### Develop host resistant resources and host range of cotton pathogens

#### Intermediate Outcomes

##### Industry

- Australian cotton growers have information on cotton varieties with resistance to the diversity of pathogens causing disease
- Growers are informed of risks of new and emerging pathogen strains due to improved pathogenicity phenotyping methods

##### Cotton breeders

- Australian cotton breeding is improved by being informed of status of pathogen diversity and dominant strains
- Australian cotton breeding has the capacity to screen for new sources of resistance for future breeding programs.
- Medium to long term pipeline of genetic diversity enrichment for disease resistance resources

##### ACDC Researchers

- Access to the foundational resources for pathologists to have access to a diverse reference set, and a panel of pathogen isolates for Tier 1 and 2 diseases which are genotyped and phenotyped
- Consensus position (with CSD and other stakeholders including overseas breeders/researchers) on one or more key/reference cultivars (possibly one per pathosystem)
- Improved interaction and science output from partnership with global institutions
- Improved investment in research due to evidence-based prioritising of pathosystems within defined areas
- Custodian of core integrated resources of hosts and pathogens and data sets allowing leadership of future research and breeding goals for cotton disease

Host range and cotton differential set identification



Source: Montana Outdoors

## B

### Understanding pathogen behaviour

## B3

### Understanding disease complexity and co-infection

#### Intermediate Outcomes

##### Industry

##### ACDC Researchers

- Australian cotton growers understand the impact of co-infection, and that diseases occur in complexes and require complex management
- Cotton growers have access to information which allows them to minimise the impact of disease complexes

- The ACDC researchers can quantify disease progression for Tier 1 pathogens, improving the area under disease development curves (disease severity and yield impacts), and understand the impact of coinfection on disease severity and resistance
- Improved understanding of disease complexes (which are currently poorly understood) and their respective economic impacts
- Improved understanding of disease interactions with climatic variables and farming practices (which are currently poorly understood) and their respective economic impacts



Black root rot



Colletotrichum rot and Fusarium rot (second right)



Phytophthora rot

Boll rot complex

Source: Cotton pest management guide

## B

### Project Leads



**Dr Cassy Percy**

Senior Research Fellow, Plant Pathology  
University of Southern Queensland  
cassy.percy@unisq.edu.au



**Dr Alexandros Georgios Sotiropoulos**

Research Fellow, Bioinformatics  
University of Southern Queensland  
alexandrosgeorgios.sotiropoulos@unisq.edu.au



**Dr Sadegh Balotf**

Research Fellow, Plant Pathology  
University of Southern Queensland  
sadegh.balotf@unisq.edu.au





## Spatial data analytics and advanced modelling

Domain C incorporates projects related to increased adoption of spatial data analytics and advanced modelling capabilities for disease prediction and management.

### Objective



Increased adoption of spatial data analytics and advanced modelling capabilities for disease prediction and management

### Aspirational outcome



The Australian cotton industry benefits from improved capability to monitor and share longitudinal and spatial data on disease incidence, severity, pathotype and co-variates



DOMAIN A Leader

**A/Prof Linda Smith**

Principal Plant Pathologist

Queensland Department of Primary Industries

Adjunct University of Southern Queensland

[linda.smith@dpi.qld.gov.au](mailto:linda.smith@dpi.qld.gov.au)



DOMAIN C Project Lead

**A/Prof Alison McCarthy**

Irrigation and Cropping Systems

University of Southern

Queensland

[alison.mccarthy@unisq.edu.au](mailto:alison.mccarthy@unisq.edu.au)



DOMAIN C Project Lead

**Prof Ravinesh Deo**

Professor (Mathematics)

University of Southern

Queensland

[ravinesh.deo@unisq.edu.au](mailto:ravinesh.deo@unisq.edu.au)



PhenoSpex PlantEye F600: Multispectral LiDAR system captures 3D plant structure & spectral indices

## C

### Spatial data analytics and advanced modelling

## C1

### Increased adoption of spatial data analytics and advanced modelling capabilities for disease prediction and management

#### Intermediate Outcomes

##### Industry

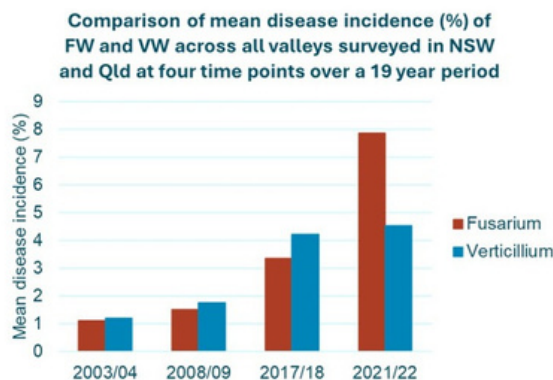
##### ACDC Researchers

- Industry have access to within season and long term, longitudinal and spatial data on disease incidence and severity of Tier 1 and selected Tier 2 pathogens
- Cotton producers decrease yield loss to disease through using targeted and timely inputs

- The ACDC Researchers have the tools and capability to accurately assess spatial and temporal trends in pathogen distribution
- Researchers have the capability to understand the causal mechanisms of spatial variation in disease severity between and within paddocks



Source: Shutterstock



Provided by Domain C Leader, A/Prof Linda Smith, Qld DPI

## D

### Fungicides and plant defense mediators

Domain D will incorporate project(s) related to research and investment in supporting the testing and introduction of new actives (fungicides and mediators of plant defence) for disease control.

The project exists to provide a strong evidence base for fungicide control of tier 1 cotton diseases. The project will utilise the reference isolates of tier 1 diseases to rapidly screen major modes of action (and sub-groups within modes of action – especially within the DMI fungicides) to accurately quantify potential for disease control.

It is recognised that a substantial body of past work may exist for experiments relating to fungicide control of cotton pathogens. However, there is a high level of diversity in methods among the past studies and there is little or no benchmarking of efficacy among modes of action or sub-classes. This study will initially utilise a highly controlled environment to systematically screen fungicides under laboratory and glasshouse conditions and then lead to field trials of a more limited range of products. Knowledge on points of failure may lead to new experimental designs. For example, where a pathogen is known to take up a fungicide and have fungicide sensitivity, the delivery mechanism will be optimised. Alternatively, if a pathogen is unable to take up a fungicide or a mode of action is only partially effective, different forms of the chemistry or mixes may be tested.

#### Objective

#### D1

**Improved fungicide and plant defense mediator options for effective disease management**



DOMAIN D Leader  
**Prof Levente Kiss**

Director, Centre for Crop Health  
University of Southern Queensland  
[levente.kiss@unisq.edu.au](mailto:levente.kiss@unisq.edu.au)

Importantly, this project will work with life science companies to improve the understanding of the role of fungicides in disease control for cotton but it will not provide support solely for the purpose of pre-commercial trials leading to registration.

This project will also examine the utility of compounds known to induce plant defense responses. Only compounds with a proven role in management of other pathosystems and with a high likelihood of commercialisation will be considered.

#### Aspirational outcome



The Australian cotton industry has access to new knowledge on fungicides and mediators of plant defense that provide effective disease control

## D Fungicides and plant defense mediators

### D1 Improved fungicide and plant defense mediator options for effective disease management

#### Intermediate Outcomes

##### Industry

##### ACDC Researchers

- Industry have access to within season and long term, longitudinal and spatial data on disease incidence and severity of Tier 1 and selected Tier 2 pathogens
- Cotton producers decrease yield loss to disease through the use of targeted and timely inputs

- The ACDC Researchers have the tools and capability to accurately assess spatial and temporal trends in pathogen distribution
- Researchers have the capability to understand the causal mechanisms of spatial variation in disease severity between and within paddocks



Domain C Researcher, Dr Noel Knight, UniSQ



Source: APVMA

## People

To ensure ongoing excellence in cotton disease research and engagement, the ACDC encourages its partners to build capacity and capability in cotton disease and celebrates its role in strengthening the future success of Australia's cotton industry.

Partners are encouraged to develop researchers with the following attributes:

- Adequate skill sets to predict and solve future challenges due to evolution and spread of new strains of cotton pathogens
- Ability to adapt advanced tools and strategies for crop pathogen characterisation, monitoring and disease management
- Ability to attract investments for cotton disease research from public and private funding agencies
- Good engagement skills enabling them to establish strong bonding with cotton industry and linked sectors, and to widen national and international networks

## Diversity, equity and inclusion

The ACDC actively supports diversity, equity and inclusiveness.

The ACDC Strategic Partners are committed to encouraging and supporting the career progression of talented women in STEM (Science, Technology, Engineering and Mathematics) and sustaining an inclusive environment for all staff and students, where possible.

## Risk management

Each ACDC partner ensures compliance with work, health and safety, and risk management obligations in accordance with the applicable law and their internal policies and procedures.

## Career development

The ACDC and its partners:

- Create opportunities for researchers to develop their professional and personal leadership skills, to broaden their networks, connect with industry, embrace new technologies and take on new challenges in an ever-changing research landscape
- Are committed to developing future research leaders in cotton disease, identifying development opportunities with an emphasis on building skills and capacity for future leadership

## Students

Higher degree by research (HDR) projects offer the opportunity to explore higher risk areas of research and/or add depth to research through exploration of mechanisms behind observed responses.

HDR projects may leverage additional investment through federal government support through the research training program and directly from the ACDC funded scholarships. The ACDC's targeted HDR investment is to fast track the development and delivery of new skills towards end user relationships.

## PhD Students

Student	Topic	Lead Supervisor	Co-supervisor
<b>Neeraj Sharma</b>	Deep learning for early detection and discrimination of <i>Verticillium</i> and <i>Fusarium</i> wilt in cotton	A/Prof Alison McCarthy (UniSQ)	A/Prof Linda Smith (Qld DPI) Prof Sam Periyannan (UniSQ) Prof Ravinesh Deo (UniSQ)
<b>Muhammad Zahaib Ilyas</b>	Characterization of <i>Eutypella</i> spp. Causing Reoccurring Wilt in Cotton	Dr Cassy Percy (UniSQ)	A/Prof Linda Smith (Qld DPI) Prof Sam Periyannan (UniSQ) Dr Sadegh Balotf (UniSQ) Prof Levente Kiss (UniSQ)
<b>Kingsten Okka</b>	Spatial data analytics and advanced modelling for disease prediction and management in Australia	Prof Ravinesh Deo (UniSQ)	Prof Sam Periyannan (UniSQ) Prof Adam Sparks (CCDM) A/Prof Linda Smith (Qld DPI)
<b>Muhammad Aamir</b>	Impact of crop rotation on the incidence of black root rot and <i>Verticillium</i> wilt in cotton.	Dr Cassy Percy (UniSQ)	Prof Sam Periyannan (UniSQ) A/Prof Linda Smith (Qld DPI) A/Prof Guna Nachimuthu (NSW DPIRD)



The ACDC PhD Students Kingsten Okka, Muhammad Zahaib Ilyas and Neeraj Sharma

## Structure

### EXECUTIVE COMMITTEE

**External Chair: Prof Mark Gibberd**  
**CRDC Executive + Program Manager**  
**UniSQ DVC(R&I) or nominee + Rep**  
**Qld DPI Executive + Representative**

- Oversees the Strategic Plan, budget, resource allocations, and engagement with major stakeholders
- Approves executive reports, project proposals and project variations and monitors the allocation of funding, cash contributions and achievements against KPI's

### TECHNICAL COMMITTEE

**Chair: ACDC Director (UniSQ)**  
**ACDC Research Domain Leaders**  
**CRDC Program Manager**  
**Scientific Advisors (as required)**

- Monitors operational and technical performance and provides advice to UniSQ (as ACDC Manager) and the Executive Committee
- Provides advice on reports to the Executive Committee prepared by the Director, new project proposals, progress and final reports, variation and/or termination

### DIRECTOR

**ACDC Director (UniSQ)**  
**ACDC Deputy Director (Qld DPI)**  
**ACDC Virtual Centre Manager, Advisors and Support (UniSQ)**

- Primary point of contact for the ACDC matters with partners, external stakeholders, and actively seeks and identifies business development and commercial partnering opportunities
- Provides the Strategic Plan, Annual Operating Plans, and Executive Reports to the Executive Committee for approval, and allocates resources against the ACDC budget

### INDUSTRY ADVISORY GROUP

**Chair: ACDC Director**  
**CRDC Representative**  
**Industry members (min 7)**

- Provides guidance and advice to the Executive Committee about how the ACDC can best achieve its outcomes, new and emerging cotton diseases, industry trends, impact of the ACDC outcomes

# 07 CONTACTS

## Project Leads

### Domain A

Linda Scheikowski (Qld DPI):

[linda.scheikowski@dpi.qld.gov.au](mailto:linda.scheikowski@dpi.qld.gov.au)

Dr Dinesh Kafle (Qld DPI): [dinish.kafle@dpi.qld.gov.au](mailto:dinish.kafle@dpi.qld.gov.au)

A/Prof Joseph Foley (UniSQ): [joseph.foley@unisq.edu.au](mailto:joseph.foley@unisq.edu.au)

Dr Murray Sharman (Qld DPI):

[murray.sharman@dpi.qld.gov.au](mailto:murray.sharman@dpi.qld.gov.au)

Dr Ben Stodart (CSU): [bstodart@csu.edu.au](mailto:bstodart@csu.edu.au)

Sarah Nolan-Gorman (WA DPIRD):

[sarah.nolan@dpird.wa.gov.au](mailto:sarah.nolan@dpird.wa.gov.au)

Edward Mwando (NT DAF): [edward.mwando@nt.gov.au](mailto:edward.mwando@nt.gov.au)

A/Prof Linda Smith (Qld DPI): [linda.smith@dpi.qld.gov.au](mailto:linda.smith@dpi.qld.gov.au)

### Domain B

Dr Cassy Percy (UniSQ): [cassy.percy@unisq.edu.au](mailto:cassy.percy@unisq.edu.au)

Dr Sadegh Balotf: [sadegh.balotf@unisq.edu.au](mailto:sadegh.balotf@unisq.edu.au)

Dr Alexandros Georgios Sotiropoulos (UniSQ):

[alexandrosgeorgios.sotiropoulos@unisq.edu.au](mailto:alexandrosgeorgios.sotiropoulos@unisq.edu.au)

Prof Sambasivam Periyannan (UniSQ):

[sambasivam.periyannan@unisq.edu.au](mailto:sambasivam.periyannan@unisq.edu.au)

### Domain C

A/Prof Alison McCarthy (UniSQ):

[alison.mccarthy@unisq.edu.au](mailto:alison.mccarthy@unisq.edu.au)

Prof Ravinesh Deo (UniSQ): [ravinesh.deo@unisq.edu.au](mailto:ravinesh.deo@unisq.edu.au)

A/Prof Linda Smith (Qld DPI): [linda.smith@dpi.qld.gov.au](mailto:linda.smith@dpi.qld.gov.au)

### Domain D

Prof Levente Kiss (UniSQ): [levente.kiss@unisq.edu.au](mailto:levente.kiss@unisq.edu.au)

## Virtual National Centre

### General enquires

[acdcnationalcentre@unisq.edu.au](mailto:acdcnationalcentre@unisq.edu.au)

### ACDC Director and Domain B Leader

Prof Sambasivam Periyannan (UniSQ):

[sambasivam.periyannan@unisq.edu.au](mailto:sambasivam.periyannan@unisq.edu.au)

### ACDC Deputy Director and Domain A and C Leader

A/Prof Linda Smith (Qld DPI): [linda.smith@dpi.qld.gov.au](mailto:linda.smith@dpi.qld.gov.au)

### Domain D Leader

Prof Levente Kiss (UniSQ): [levente.kiss@unisq.edu.au](mailto:levente.kiss@unisq.edu.au)

### The ACDC Virtual National Centre Team

Email: [acdcnationalcentre@unisq.edu.au](mailto:acdcnationalcentre@unisq.edu.au)

Liz Neary (UniSQ): Manager

Kirsten Vonhoff (UniSQ): Senior Research Operations

Coordinator

### CRDC Innovation Broker

Elsie Pearce: [elsie.pearce@crdc.com.au](mailto:elsie.pearce@crdc.com.au)

### CRDC R&D Manager (Crop Protection & Stewardship)

Susan Maas: [susan.maas@crdc.com.au](mailto:susan.maas@crdc.com.au)

## Industry Advisory Group

### Queensland

Nic Clapham, Grower

Dave Kelly, Consultant

Doug McCollum, Policy Officer, Cotton Australia

### New South Wales

Mick Humphries, Grower

Karen Kirkby, Plant Pathologist, NSW DPIRD

Steve Madden, Consultant

Heath McWhirter, Consultant

Richie Quigley, Grower

Elle Storrier, Consultant

### Northern Territory

Simone Cameron, Senior Policy Manager, Cotton Australia

