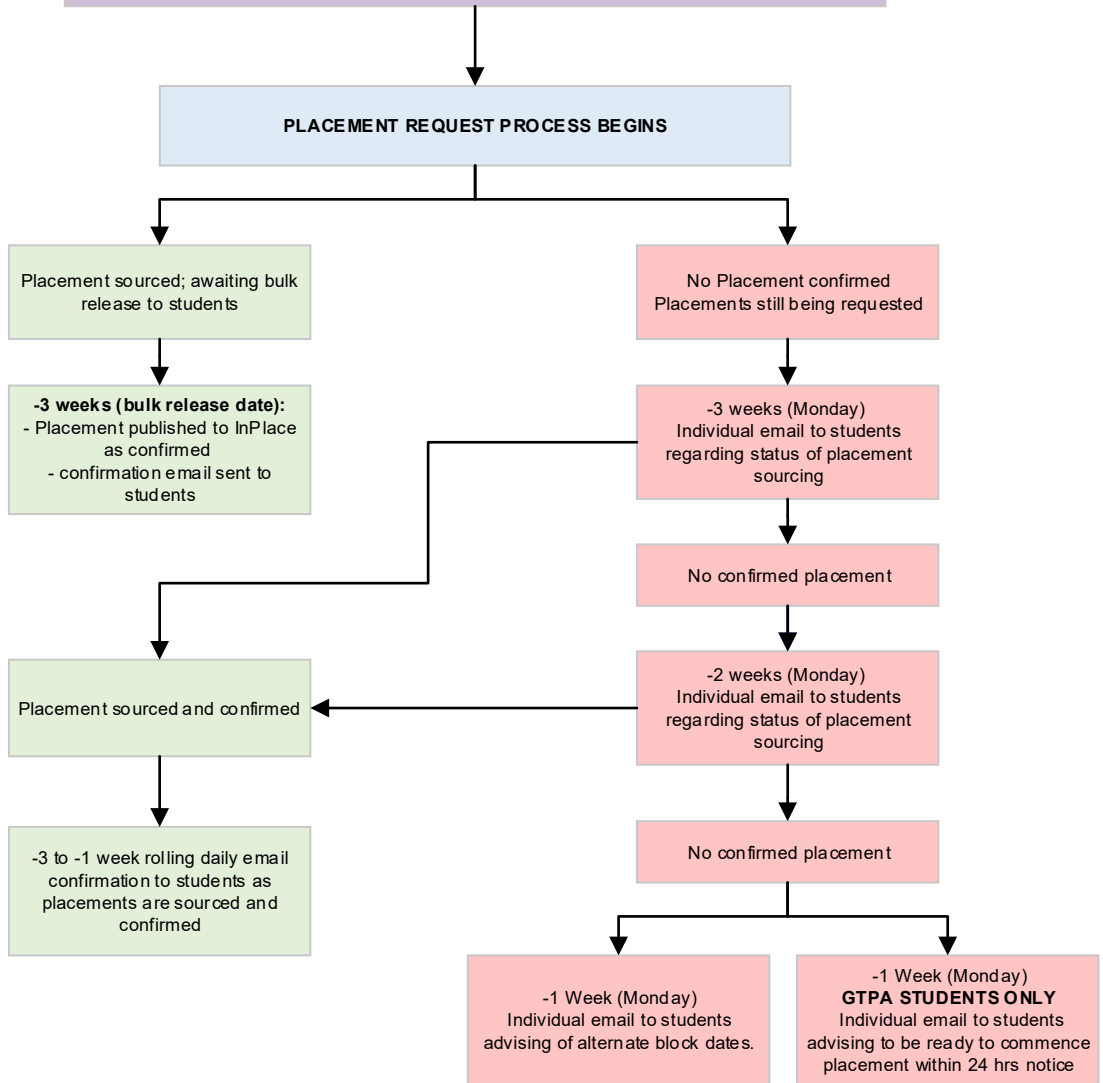


PRE-PLACEMENT REQUIREMENTS - to be completed as per the Education Placements Important Dates and Information document

1. Student is enrolled in course
2. Student has updated all relevant sections in 'Student Information Required' on InPlace to notify the WIL team of student circumstances
3. Student has provided all mandatory requirements



Key:

-3 weeks: Three weeks prior to placement commencement as per PEX Calendar

-2 week: Two weeks prior to placement commencement as per PEX Calendar

-1 week: One week prior to placement commencement as per PEX Calendar